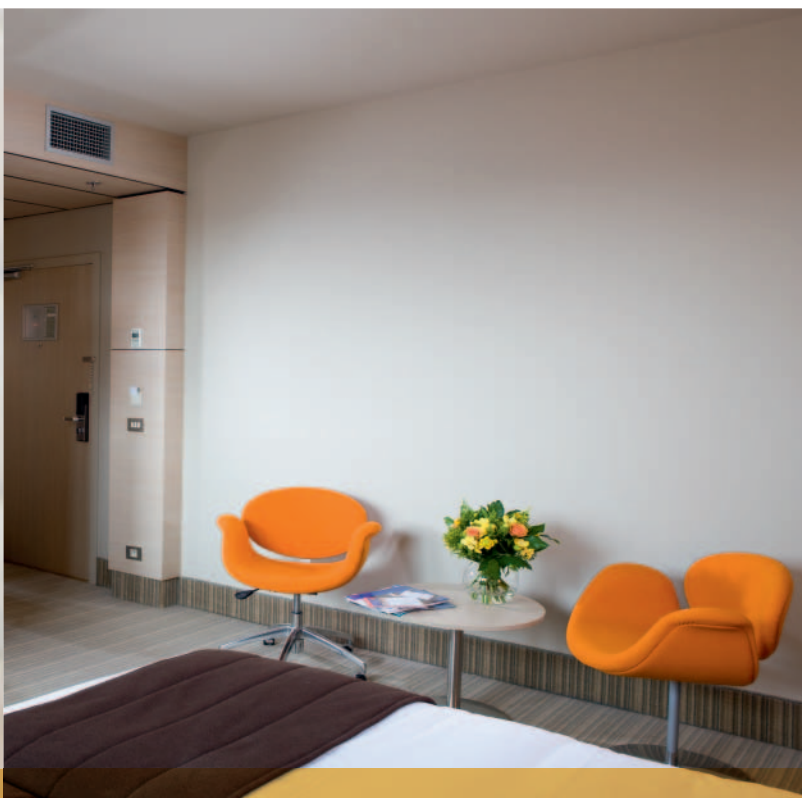
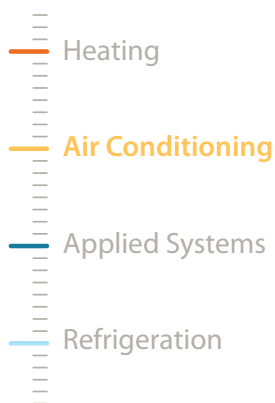
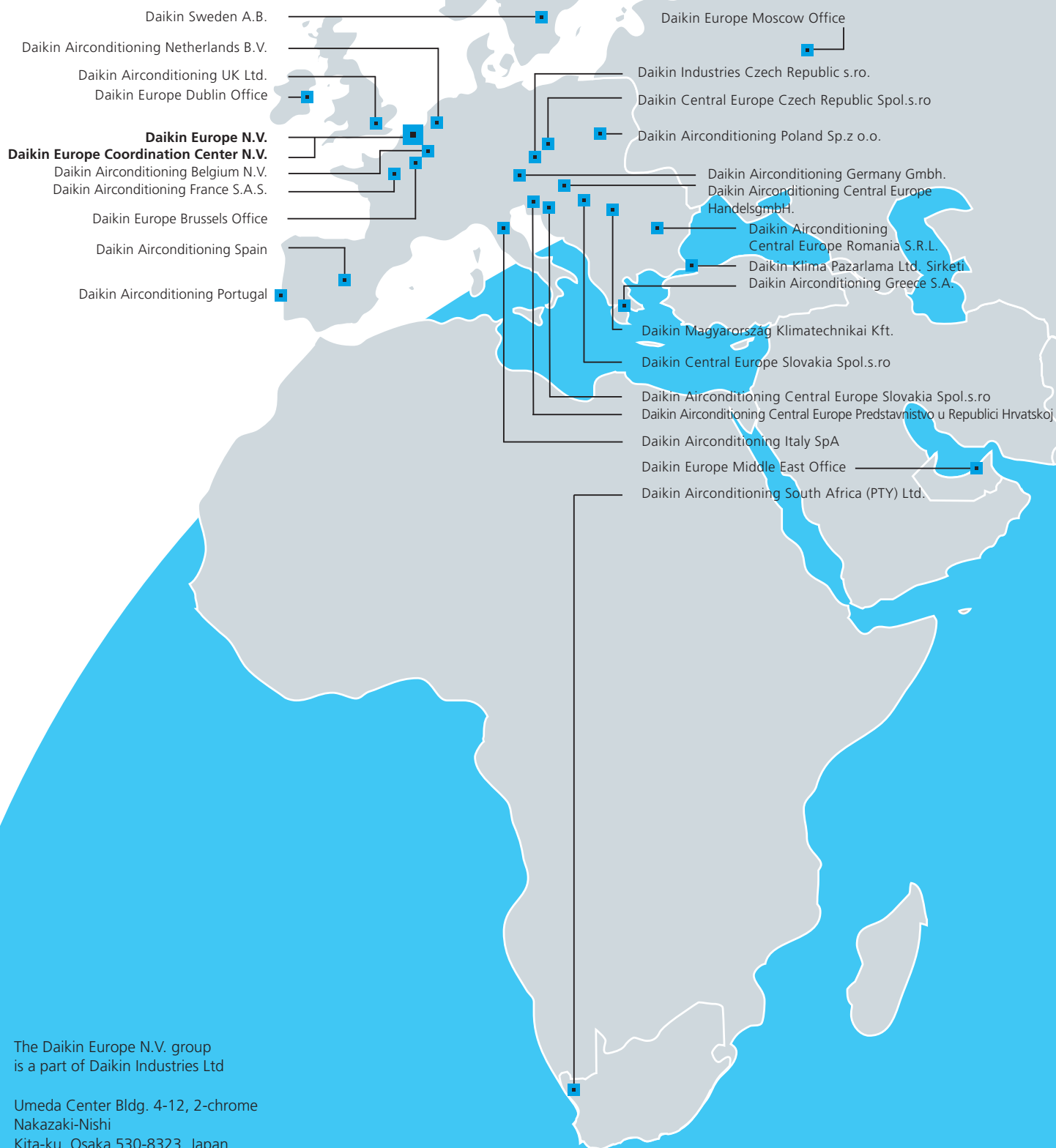


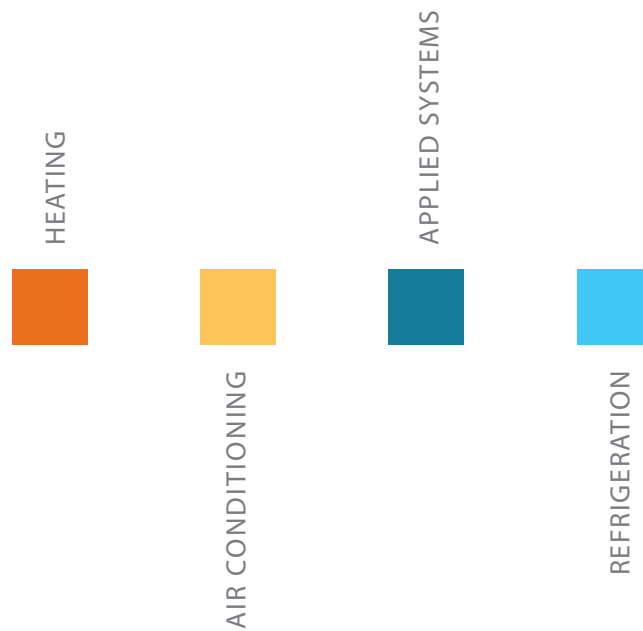


# Residential & Commercial Catalogue

° All Seasons  
CLIMATE COMFORT











## THE LEADER IN PRODUCT QUALITY

Daikin produces a highly energy efficient and comprehensive range of quality indoor climate control products and systems for commercial, residential and industrial applications. Our product portfolio is based on four distinct core 'pillars' illustrating the diversification of Daikin:

-  optimised **heating** solutions: air to air (residential and commercial application) & air to water (residential application with optional domestic hot water)
-  state of the art direct expansion **air conditioning** for residential & commercial application
-  **applied systems** for central cooling and heating for process and comfort application
-  medium to low temperature **refrigeration** for retail environment

Each pillar harnesses advanced technologies to deliver maximum energy efficiency and minimum energy consumption and running costs throughout the equipment life cycle. The width of our product range is also extensive and embracing in its coverage of these key indoor climate control disciplines to a point where we are confident of its ability to meet the requirements of our end user, specifier, contractor and installer customer base at all times.

## THE LEADER IN MANUFACTURING QUALITY AND CUSTOMER SERVICE

Since our establishment in Ostend (Belgium) in 1972, we have updated and expanded our manufacturing facilities, including those opened in Milan (Italy), Plzen and Brno (Czech Republic) and through acquisitions in Cramlington (UK), Göglingen (Germany) and Cecchina (Italy), to a point where they are acknowledged as the most advanced in their field in Europe. Furthermore, all our plants benefit from our Japanese parent's policy of zero defect production, super efficient supply chain management and unrivalled research and development support. These substantial production facilities are underpinned by a network of wholly owned affiliate companies in the UK, France, Germany, Italy, Spain, Portugal, Poland, Greece, Belgium, The Netherlands, Sweden, Central Europe and South Africa, as well as numerous independent distributors throughout Europe, Africa and the Middle East supported by several offices in Ireland, Russia and Turkey.

Experienced and professional support of this order enables us to maintain an enviably close relationship with international markets, tailor our product programme to suit precise regional requirements and respond quickly and efficiently to any area of potential market expansion.





# TABLE OF CONTENTS

Daikin's 4 pillars of growth	1
Table of contents	3
Environmental awareness	4
Energy labelling	5



## Air conditioning

### **Residential & Commercial Applications** **6**

Wall mounted units	10
Flexi type units	12
Floor standing units	15
4-way blow ceiling mounted cassette	17
Ceiling suspended units	20
Concealed ceiling units	24

### **Rooftop & Packaged Systems** **29**

Rooftops	30
Packaged systems	32



# ENVIRONMENTAL AWARENESS

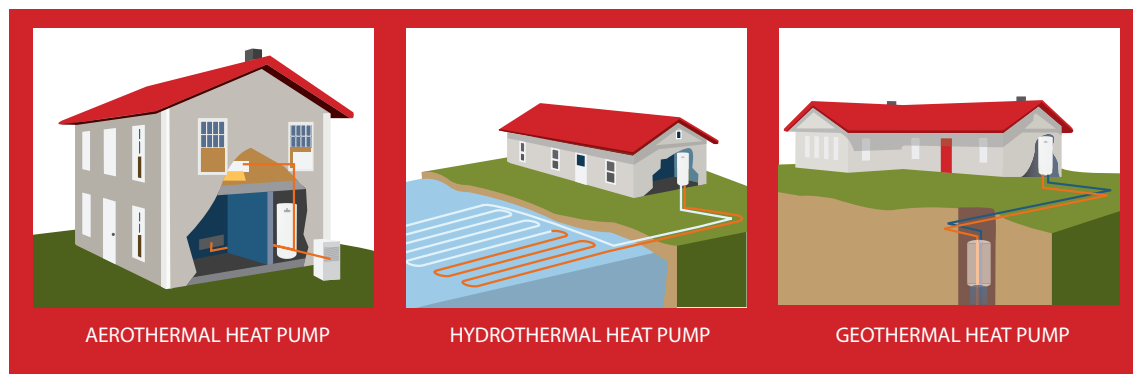
## EU recognises heatpumps

**The approval of the Renewable Energy Directive by the European Parliament in December 2008 saw Daikin's efforts rewarded for designing energy-efficient air-to-water and air-to-air heat pumps. In its quest for ever more energy-efficient heating products, Daikin develops heat pumps that meet all the user's needs and consume considerably less primary energy than its fossil-fuel based competitors.**

For the first time, the Directive recognises also aerothermal and hydrothermal energy as renewable energy sources. With the recognition by the EU of the outside air, ground and (surface, lake or well) water as renewable energy sources, much is expected of the member states' promotion of heat pump technologies using these renewable energy sources.

Alongside with solar panels and wind turbines, heat pumps may also be considered for subsidies, promotion campaigns and tax benefits. The goal of the EU is to increase the share of renewable energy in Europe to 20% by 2020."

The urgency of the EU's 20/20/20 objectives – reducing carbon emissions and energy consumption by 20% and increasing the share of renewable energy by 20%, all by 2020 – and the fact that heat pumps can contribute directly to meeting these ambitious objectives, present a major opportunity for heat pumps.



## ENERGY EFFICIENT EQUIPMENT

Many product innovations stem from Daikin environmental awareness. Inverter control reduces unit start up time and varies compressor output to match precise system load requirements. Also, when linked with Daikin DC compressor motors, it allows Daikin equipment to achieve the highest COP ratings in the market. Similarly, advanced computerised control packages ensure optimum system efficiency at all times and allow remote monitoring via the internet.

## REDUCING WASTE

Daikin was the first European air conditioning manufacturer to gain ISO14001 environmental certification and all Daikin plants and subsidiaries are now similarly certified. The company's zero waste policy ensures that many of its manufacturing by products can be recycled, reused or recovered.

## RECYCLING MATERIALS

Daikin recycles materials as a matter of course. For instance, the sludge recovered from pre treated waste water is used in cement manufacture. The recycling of other types of waste is also supported by investment in returnable packaging.

# ENERGY LABELLING

Energy labelling is part of a European Climate Change program, targeting energy efficiency as one method of reducing CO<sub>2</sub> emissions. The European Commission determines that improved awareness will enable users to purchase the most ecologically economic unit for their needs.

## WHAT?

The label provides information on air conditioning unit energy consumption. Units with cooling capacities up to 12kW are classified by energy consumption in categories from 'A' to 'G' and colour coded accordingly. The most energy efficient 'A' category units are indicated by a dark green arrow and the least efficient 'G' category units, by a red arrow. Thus users can compare the efficiencies of equal types of unit from different brands.

## WHAT IS LISTED ON THE LABEL

Manufacturer's name and logo and type of indoor and outdoor units (\*).

## INDICATED ANNUAL ENERGY CONSUMPTION

Approximate annual energy consumed is indicated, based on a standard residential model. Annual consumption is calculated by multiplying total power input by an average of 500 hr/year IN COOLING MODE AT FULL LOAD. Annual energy consumption cost is calculated by multiplying this figure by user's electricity tariff.

## COOLING OUTPUT

Is the unit's cooling capacity in kW operating in cooling mode at full load. Users should select a unit with a rated output sufficient for their cooling/heating requirements. Oversized units can increase on/off cycling, shortening service life and undersized units will not provide adequate cooling or heating. Output figures can be obtained from the manufacturer or local dealer.

## ENERGY EFFICIENCY RATIO (EER)

Is the unit's cooling output divided by the total electrical power input required to deliver it – the higher the EER, the greater the energy efficiency.

## TYPE

Indicates whether the unit is a cooling only or cooling/heating model. Cooling mode indicates whether the unit is water or air cooled.

## HEAT OUTPUT

Is the heating capacity of the unit in kW, operating in heating mode at full load.

### Energy efficiency class of the unit in **cooling** mode:

<b>A</b>	EER > 3.20
<b>B</b>	3.20 ≥ EER > 3.00
<b>C</b>	3.00 ≥ EER > 2.80
<b>D</b>	2.80 ≥ EER > 2.60
<b>E</b>	2.60 ≥ EER > 2.40
<b>F</b>	2.40 ≥ EER > 2.20
<b>G</b>	2.20 ≥ EER

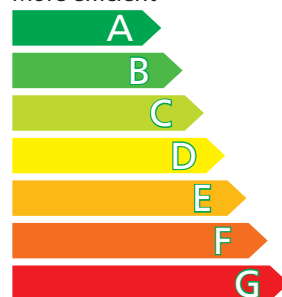
### Energy efficiency class of the unit in **heating** mode:

<b>A</b>	COP > 3.60
<b>B</b>	3.60 ≥ COP > 3.40
<b>C</b>	3.40 ≥ COP > 3.20
<b>D</b>	3.20 ≥ COP > 2.80
<b>E</b>	2.80 ≥ COP > 2.60
<b>F</b>	2.60 ≥ COP > 2.40
<b>G</b>	2.40 ≥ COP

## Energy

Manufacturer  
Outside unit  
Inside unit

More efficient



Less efficient

**Annual energy consumption, kWh in cooling mode**

(Actual consumption will depend on how the appliance is used and climate)

**Cooling output** **kW**

**Energy efficiency ratio**

*Full load (the higher the better)*

**Type**

- Cooling only
- Cooling + Heating
- Air cooled
- Water cooled

**Heat output** **kW**

**Heating performance**

A: higher G: lower

**Noise**  
(dB(A) re 1 pW)

Further information is contained in product brochures

Air-conditioner  
Energy Label Directive 2002/31/EC



\* For multi models, Daikin indicates a single outdoor unit with a maximum of 2 wall mounted indoor units.







Daikin residential air conditioning is the modern, economic and efficient way to switch on to springtime - in the living room, dining room, kitchen or bedroom, night and day, throughout the year.

Daikin air conditioning units are easy to install, easy to use, ultra reliable, quiet running and come in an elegant and up to date range of wall, floor and ceiling mounted indoor models.

Also, the incorporation of inverter control enables Daikin to bring air conditioning technology of the future to the residential market today. Inverter control cuts start up time and energy consumption by almost a third, alters unit output to suit outdoor conditions, improves performance relative to power input, ensures a more even room temperature and eliminates power surges and stop/start cycles.







## RESIDENTIAL & COMMERCIAL APPLICATIONS

<b>Benefits overview</b>	<b>8</b>
<b>Wall Mounted Units</b>	<b>10</b>
FTY-GX / RY-GX	10
FTD-F / RD-F	11
<b>Flexi Type Units</b>	<b>12</b>
FL-HA / R-G	12
FL-HA / R-G	13
<b>Floor Standing Unit</b>	<b>15</b>
FV-L / R-FUV1	15
FV-L / R-FUY1	16
<b>4-Way Blow Ceiling Mounted Cassettes</b>	<b>17</b>
FHC-K / R-G	17
FHC-K / R-FUV1	18
FHC-K / R-FUY1	19
<b>Ceiling Suspended Units</b>	<b>20</b>
FH-B / R-G	20
FH-B / R-FUV1	21
FH-B / R-FUY1	22
<b>Concealed Ceiling Units</b>	<b>24</b>
FDYB-C/RV-CV1	24
FDYB-C/RV-CY1	25
FDYM-C/RV-CV1	26
FDYM-C/RV-CY1	27

# Benefits overview

## Split & Sky Air®

		Wall mounted units	
		FTY-GX	FTD-F
We care icons	 <b>Energy efficiency.</b> Daikin air conditioners are energy efficient and economical (full range A class energy label).		
	 <b>Night set mode.</b> Saves energy, by preventing overcooling or overheating during night time.	✓	✓
	 <b>Fan only.</b> The unit can be used as fan, blowing air without heating or cooling.	✓	✓
Comfort	 <b>Powerful mode.</b> Can be selected for rapid heating or cooling; after the powerful mode is turned off, the unit returns to the preset mode.	✓	✓
	 <b>Auto cooling-heating changeover.</b> Automatically selects heating or cooling mode to achieve the set temperature.	✓	
	 <b>Whisper quiet.</b> Daikin indoor units are whisper quiet. Also the outdoor units are guaranteed not to disturb the quiet of the neighbourhood.	✓	
Air flow	 <b>Vertical auto swing.</b> Possibility to select automatic vertical moving of the air discharge flaps for efficient air and temperature distribution throughout the room.	✓	✓
	 <b>Horizontal auto swing.</b> Possibility to select automatic horizontal moving of the air discharge louvre, for uniform air flow and temperature distribution.		
	 <b>Auto fan speed.</b> Automatically selects the necessary fan speed to reach or maintain the set temperature.	✓	✓
	 <b>Fan speed steps.</b> Allows to select up to the given number of fan speed.		
Humidity control	 <b>Dry programme.</b> Allows humidity levels to be reduced without variations in room temperature.	✓	✓
Air treatment	 <b>Titanium apatite photocatalytic air purification filter.</b> Removes airborne microscopic particles, powerfully decomposes odours and restrains the reproduction of bacteria, viruses, microbes to ensure a steady supply of clean air.	✓	✓
	 <b>Air filter.</b> Removes airborne dust particles to ensure a steady supply of clean air.		
Remote control & timer	 <b>Weekly timer.</b> Can be set to start heating or cooling anytime on a daily or weekly basis.		
	 <b>24 Hour timer.</b> Can be set to start heating or cooling anytime during a 24 hour period		✓
	 <b>Infrared remote control.</b> Starts, stops and regulates the air conditioner from a distance.	✓	✓
	 <b>Centralised control.</b> Starts, stops and regulates several air conditioners from one central point.		
Other functions	 <b>Auto-restart.</b> The unit restarts automatically at the original settings after power failure.	✓	✓
	 <b>Self-diagnosis.</b> Simplifies maintenance by indicating system faults or operating anomalies.	✓	✓

Flexi type unit	Floor standing unit	4-Way blow ceiling mounted cassette	Ceiling suspended unit	Concealed ceiling units	
FL-HA	FV-L	FHC-K	FH-B	FDYB-C	FDYM-C
					
			✓		
✓					
		✓	✓		
✓					
				✓	✓
			✓	✓	✓
✓					
	✓	✓	✓		
	2	2	2	4	4
✓	✓	✓	✓		
✓					
		✓			
	✓	✓	✓		
✓			✓		
✓		✓	✓		
✓	✓	✓	✓		
✓	✓	✓	✓		
✓	✓	✓	✓		



FTY25-35GX



RY25-35GX



ARC461A1

- › Wide angle louvers provide a comfortable air flow throughout the entire room
- › Outdoor units for pair application
- › 24 hour timer can be set to start heating or cooling anytime during a 24 hour period
- › Daikin outdoor units are neat, sturdy and can easily be mounted on a roof or terrace or simply placed against an outside wall
- › Indoor unit on/off switch
- › Anti-corrosion treated plate type heat exchangers



## HEATING & COOLING

INDOOR UNITS				FTY25GXV1	FTY35GXV1
EER				3.01	3.21
COP				3.64	3.45
Annual energy consumption			kWh	-	
Energy label	Cooling/Heating			-	
Dimensions	Unit	HeightxWidthxDepth	mm	288x800x204	
Weight	Unit		kg	9	
Casing	Colour			White	
Sound pressure level	Cooling	High/Nom./Low/Silent operation	dBA	38/32/27/25	38/34/29/27
	Heating	High/Nom./Low/Silent operation	dBA	38/33/27/25	40/35/29/27
Refrigerant	Type			R-22	
Power supply	Phase/Frequency/Voltage		Hz/V	1~/50/220	
Piping connections	Liquid	OD	mm	6.35	
	Gas	Quantity - OD	mm	- 9.50	- 12.70
	Drain	Quantity-OD	mm	-18.0	

OUTDOOR UNITS				RY25GXV1	RY35GXV1
Dimensions	Unit	HeightxWidthxDepth	mm	550x765x285	
Weight	Unit		kg	30	34
Operation range	Cooling	Ambient~Min.~Max.	°CDB	~~~	
	Heating	Ambient~Min.~Max.	°CWB	~~~	
Sound power level	Cooling	Nom.	dBA	-	
Sound pressure level	Cooling	High	dBA	48	49
	Heating	High	dBA	49	50
Refrigerant	Type			R-22	
Power supply	Phase/Frequency/Voltage		Hz/V	1~/50/220	
Piping connections	Level difference/U - OU/Max./U - IU/Max./Heat insulation			10.0/-/	
System - Total piping length	System	Actual	m	-	

Note: Cooling: indoor temp.27°CDB, 19°CWB; outdoor temp.35°CDB, 24°CWB; equivalent piping length: 5m  
 Note: Heating: indoor temp.20°CDB; outdoor temp.7°CDB, 6°CWB; equivalent refrigerant piping: 5m





FTD50FV1K



RD50FV1K



ARC433B23

- › Flat, stylish front panel blends easily within any interior décor and is more easy to clean
- › Daikin outdoor units are neat, sturdy and can easily be mounted on a roof or terrace or simply placed against an outside wall
- › Self diagnosis simplifies maintenance by indicating system faults or operating anomalies
- › Long piping length for flexible installation
- › Titanium apatite photocatalytic air purification filter removes airborne microscopic particles, powerfully decomposes odours and helps to prevent the propagation of bacteria, viruses, microbes to ensure a steady supply of clean air
- › A special acryl precoated fin for anti-corrosion treatment on the heat exchanger ensures greater resistance against severe weather conditions
- › Vertical auto swing moves the discharge flaps up and down for efficient air and temperature distribution throughout the room
- › Wide angle louvers provide a comfortable air flow throughout the entire room
- › Indoor unit on/off switch



## COOLING-ONLY

INDOOR UNITS				FTD50FV1K	FTD60FV1K
EER				3.20	2.92
COP				-	-
Annual energy consumption kWh				-	-
Energy label	Cooling/Heating			B/	C/
Dimensions	Unit	HeightxWidthxDepth	mm	290x1050x238	
Weight	Unit		kg	12	
Casing	Colour			White	
Sound pressure level	Cooling	High/Nom./Low	dBA	44/40/36	48/44/39
Refrigerant	Type			R-22	
Power supply	Phase/Frequency/Voltage			1~/50/220-240	
Piping connections	Liquid	OD	mm	6.35	
	Gas	Quantity - OD	mm	- 15.9	
	Drain	Quantity-OD	mm	-18	

OUTDOOR UNITS				RD50FV1K	RD60FV1K
Dimensions	Unit	HeightxWidthxDepth	mm	685x800x300	770x900x320
Weight	Unit		kg	49	68
Operation range	Cooling	Ambient~Min.~Max.	°CDB	~~~	
	Heating	Ambient~Min.~Max.	°CWB	~~~	
Sound power level	Cooling	Nom.	dBA	-	
Sound pressure level	Cooling	High/Nom.	dBA	-/54 + 55	54 + 55/-
Refrigerant	Type			R-22	
Power supply	Phase/Frequency/Voltage			1~/50/220-240	
Piping connections	Level difference/U - OU/Max./U - IU/Max./Heat insulation			15/-/	
System - Total piping length	System	Actual	m	-	

Note: Cooling: indoor temp.27°CDB, 19°CWB; outdoor temp.35°CDB,24°CWB equivalent refrigerant piping length: 5m



FL50HAV1

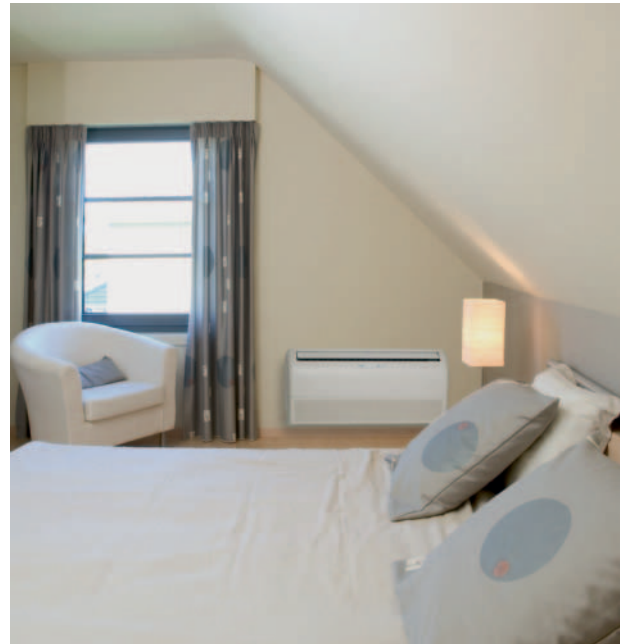


R50GV1



ARC423A20

- › Stylish design
- › Daikin outdoor units are neat, sturdy and can easily be mounted on a roof or terrace or simply placed against an outside wall
- › 24 hour timer can be set to start heating or cooling anytime during a 24 hour period
- › Acryl pretreated outdoor unit heat exchanger PE fins improve resistance to salt corrosion and atmospheric pollution and increase unit durability
- › Auto-restart ensures that the unit restarts automatically at the original settings after power failure
- › Outdoor units for pair application
- › Filter cleaning indicator
- › Indoor unit on/off switch
- › Air purification filter deodorises the air and helps to prevent bacterial and viral propagation



## COOLING ONLY

INDOOR UNITS				FL35HAV1
EER				3.11 (2) + 2.93 (3)
COP				-
Annual energy consumption			kWh	562 + 598
Energy label	Cooling/Heating			B + C/
Dimensions	Unit	HeightxWidthxDepth	mm	490x1050x200
	Unit		kg	17
Casing	Colour			Almond white
Sound pressure level	Cooling	High/Nom./Low	dBA	46/41/34
Refrigerant	Type			R-22
Power supply	Phase/Frequency/Voltage			1~/50/220-240
Piping connections	Liquid	OD	mm	6.35
	Gas	Quantity - OD	mm	- 12.7
	Drain	Quantity-OD	mm	-18

OUTDOOR UNITS				R35GV1
Dimensions	Unit	HeightxWidthxDepth	mm	540x750x270
Weight	Unit		kg	37
Operation range	Cooling	Ambient~Min.~Max.	°CDB	19.4~46
	Heating	Ambient~Min.~Max.	°CWB	---
Sound power level	Cooling	Nom.	dBA	-
Sound pressure level	Cooling	Nom.	dBA	48 (1) + 49 (2)
Refrigerant	Type			R-22
Power supply	Phase/Frequency/Voltage			1~/50/220-240
Piping connections	Level difference/U - OU/Max./U - IU/Max./Heat insulation			-/15/
System - Total piping length	System	Actual	m	-

Note (1) Cooling: indoor temp. 27°CDB, 19°CWB; outdoor temp. 35°CDB, 24°CWB; equivalent piping length: 5m

Note (2) 220V

Note (3) 240V



FL50HAV1

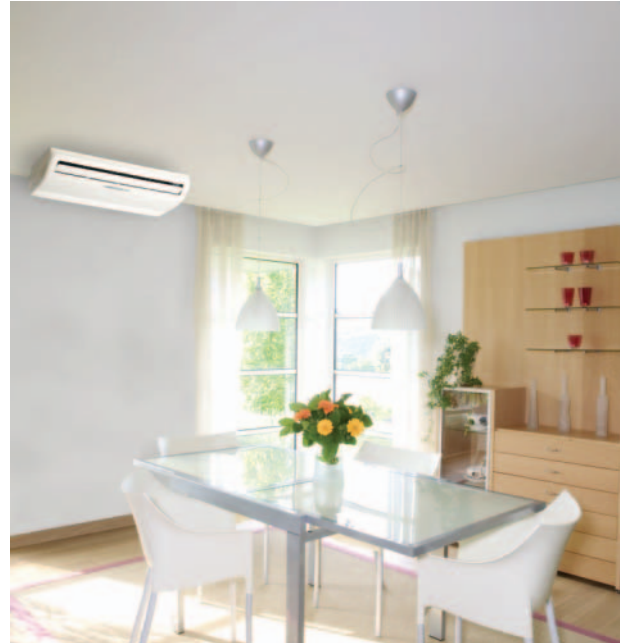


R50GV1K9



ARC423A20

- › Stylish design
- › Daikin outdoor units are neat, sturdy and can easily be mounted on a roof or terrace or simply placed against an outside wall
- › 24 hour timer can be set to start heating or cooling anytime during a 24 hour period
- › Acryl pretreated outdoor unit heat exchanger PE fins improve resistance to salt corrosion and atmospheric pollution and increase unit durability
- › Auto-restart ensures that the unit restarts automatically at the original settings after power failure
- › Outdoor units for pair application
- › Filter cleaning indicator
- › Indoor unit on/off switch
- › Air purification filter deodorises the air and helps to prevent bacterial and viral propagation



## COOLING ONLY

INDOOR UNITS				FL50HAV1
EER				2.58 (2) + 2.35 (3)
COP				-
Annual energy consumption			kWh	970 + 1062
Energy label	Cooling/Heating			E + G/
Dimensions	Unit	HeightxWidthxDepth	mm	490x1050x200
	Unit		kg	17
Casing	Colour			Almond white
Sound pressure level	Cooling	High/Nom./Low	dBA	47/43/39
Refrigerant	Type			R-22
Power supply	Phase/Frequency/Voltage			1~/50/220-240
Piping connections	Liquid	OD	mm	6.35
	Gas	Quantity - OD	mm	- 15.9
	Drain	Quantity-OD	mm	-18

OUTDOOR UNITS				R50GV1K9
Dimensions	Unit	HeightxWidthxDepth	mm	540x750x270
Weight	Unit		kg	42
Operation range	Cooling	Ambient~Min.~Max.	°CDB	19.4~46
	Heating	Ambient~Min.~Max.	°CWB	~-~
Sound power level	Cooling	Nom.	dBA	-
Sound pressure level	Cooling	Nom.	dBA	49 (1) + 50 (2)
Refrigerant	Type			R-22
Power supply	Phase/Frequency/Voltage			1~/50/220-240
Piping connections	Level difference/UU - OU/Max./U - U/Max./Heat insulation			-/15/
System - Total piping length	System	Actual	m	-

Note (1) Cooling: indoor temp. 27°CDB, 19°CWB; outdoor temp. 35°CDB, 24°CWB; equivalent piping length: 5m

Note (2) 220V

Note (3) 240V

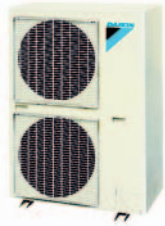








FV71LAVE3



R100FUV19

- › Ideal for installation where extra high ceilings could lead to inefficient heating from ceiling mounted units
- › Outdoor units for pair application
- › Horizontal auto swing moves the discharge flaps left and right for efficient air and temperature distribution throughout the room
- › Outdoor units are fitted with a scroll compressor, renowned for its low noise and high energy efficiency
- › Manually adjustable vertical louvres
- › Daikin outdoor units are neat, sturdy and can easily be mounted on a roof or terrace or simply placed against an outside wall
- › LCD displays text, numerals and graphics indicating temperature setting, timer setting, auto swing, fan speed etc
- › LCD panel can also be detached and used as remote control, enabling the unit to be controlled from another room
- › Two selectable thermo-sensors
- › Easy installation and maintenance



## COOLING ONLY

INDOOR UNITS				FV71LAVE3	FV100LAVE3
EER				2.92 (1) + 2.91 (2)	2.82 (1) + 2.82 (2)
COP				-	-
Annual energy consumption				1335 + 1325	1880 + 1860
Energy label	Cooling/Heating	kWh		C/	
Dimensions	Unit	HeightxWidthxDepth	mm	1850x600x270	1850x600x350
Weight	Unit	kg		39	46
Casing	Colour	White			
Sound pressure level	Cooling	High/Low	dB(A)	41 (1) + 43 (2)/35 (1) + 37 (2)	46 (1) + 48 (2)/40 (1) + 42 (2)
Refrigerant	Type	R-22			
Power supply	Phase/Frequency/Voltage	Hz/V		1/50/60/220-240/220	
Piping connections	Liquid	OD	mm	9.52	9.52
	Gas	Quantity - OD	mm	- 15.9	- 19.1
	Drain	Quantity-OD	mm	-26	-26

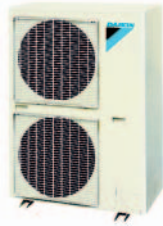
OUTDOOR UNITS				R71FUV19	R100FUV19
Dimensions	Unit	HeightxWidthxDepth	mm	816x880x370	1215x880x370
Weight	Unit	kg		82	105
Operation range	Cooling	Ambient~Min.~Max.	°CDB	21~52	21~52
	Heating	Ambient~Min.~Max.	°CWB	~	~
Sound power level	Cooling	Nom.	dB(A)	-	-
Refrigerant	Type	R-22			
Power supply	Phase/Frequency/Voltage	Hz/V		1~/50/220-440	
Piping connections	Level difference/OU - OU/Max./OU - OU/Max./Heat insulation	m		30/-/	
System - Total piping length	System	Actual	m	-	

Note (1) Cooling: indoor temp. 27°CDB, 19.5°CWB; outdoor temp. 35°CDB, 24°CWB; equivalent piping length: 5m (horizontal)

Note (2) Cooling: indoor temp. 27°CDB, 19.5°CWB; outdoor temp. 35°CDB, 24°CWB; equivalent piping length: 5m (horizontal); Standard JIS B8616



FV100,125LAVE3



R100,125FUY19

- › Ideal for installation where extra high ceilings could lead to inefficient heating from ceiling mounted units
- › Outdoor units for pair application
- › Horizontal auto swing moves the discharge flaps left and right for efficient air and temperature distribution throughout the room
- › Outdoor units are fitted with a scroll compressor, renowned for its low noise and high energy efficiency
- › Manually adjustable vertical louvres
- › Daikin outdoor units are neat, sturdy and can easily be mounted on a roof or terrace or simply placed against an outside wall
- › LCD displays text, numerals and graphics indicating temperature setting, timer setting, auto swing, fan speed etc
- › LCD panel can also be detached and used as remote control, enabling the unit to be controlled from another room
- › Two selectable thermo-sensors
- › Easy installation and maintenance



## COOLING ONLY

INDOOR UNITS				FV71LAVE3	FV100LAVE3	FV125LAVE3
EER				2.92 (1) + 2.91 (2)	2.82 (1) + 2.82 (2)	2.90 (1) + 2.88 (2)
COP				-		
Annual energy consumption			kWh	1335 + 1325	1880 + 1860	2245 + 2225
Energy label	Cooling/Heating			C/		
Dimensions	Unit	HeightxWidthxDepth	mm	1850x600x270	1850x600x350	
Weight	Unit		kg	39	46	47
Casing	Colour			White		
Sound pressure level	Cooling	High/Low	dBA	41 (1) + 43 (2)/35 (1) + 37 (2)	46 (1) + 48 (2)/40 (1) + 42 (2)	49 (1) + 51 (2)/43 (1) + 45 (1)
Refrigerant	Type			R-22		
Power supply	Phase/Frequency/Voltage			1/50/60/220-240/220		
Piping connections	Liquid	OD	mm	9.52		
	Gas	Quantity - OD	mm	- 15.9	- 19.1	
	Drain	Quantitv-OD	mm	-26		

OUTDOOR UNITS				R71FUY19	R100FUY19	R125FUY19
Dimensions	Unit	HeightxWidthxDepth	mm	816x880x370	1215x880x370	
Weight	Unit		kg	80	101	106
Operation range	Cooling	Ambient~Min.~Max.	°CDB	21~52		
	Heating	Ambient~Min.~Max.	°CWB	---		
Sound power level	Cooling	Nom.	dBA	-		
Refrigerant	Type	R-22				
Power supply	Phase/Frequency/Voltage		Hz/V	3~/50/380-415		
Piping connections	Level difference/1U - 0U/Max./1U - 1U/Max./Heat insulation		m	30/-/		
System - Total piping length	System	Actual	m	-		

Note (1) Cooling: indoor temp. 27°CDB, 19°CWB; outdoor temp.35°CDB, 24°CWB; equivalent piping length: 5m (horizontal)

Note (2) Cooling: indoor temp. 27°CDB, 19°CWB; outdoor temp.35°CDB, 24°CWB; equivalent piping length: 5m (horizontal); Standard JIS B8616



FHC50,60K



R50GV1



BRC1C61

BRC7C613W

- › Daikin outdoor units are neat, sturdy and can easily be mounted on a roof or terrace or simply placed against an outside wall
- › Acryl pretreated outdoor unit heat exchanger PE fins improve resistance to salt corrosion and atmospheric pollution and increase unit durability
- › Outdoor units for pair application
- › Ideal solution for shops, restaurants or offices requiring maximum floor space for furniture, decorations and fittings
- › Choice between 8 air flow distribution patterns
- › Possibility to shut 1 or 2 flaps for easy installation in corners
- › Air flow distribution for ceiling heights up to 4.2m without capacity loss
- › Choice between 3 auto swing positions for maximum comfort: standard, draught prevention, ceiling soiling prevention
- › Two selectable thermo-sensors
- › Standard drain pump with 750mm lift
- › Centralised control of several units can be achieved via 3 wired controls: centralised remote control, unified on/off control, schedule timer



## COOLING ONLY

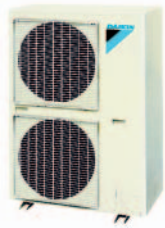
INDOOR UNITS				FHC50KVE9	FHC60KVE9
EER				2.64 (1) + 2.64 (2)	2.63 (1) + 2.62 (2)
COP				-	-
Annual energy consumption			kWh	1010 + 1005	1225 + 1220
Energy label	Cooling/Heating			D/	
Dimensions	Unit	HeightxWidthxDepth	mm	230x840x840	
Weight	Unit		kg	24	
Sound pressure level	Cooling	High/Low	dBA	33 + 35/29 + 31	35 + 37/30 + 32
Refrigerant	Type			R-22	
Power supply	Phase/Frequency/Voltage			1~/50/60/220-240/220	
Piping connections	Liquid	OD	mm	6.35	
	Gas	Quantity - OD	mm	- 15.9	
	Drain	Quantity-OD	mm	-18.0	
Decoration panel	Model			BYC125K-W1	
	Colour			White	
	Dimensions	HeightxWidthxDepth	mm	40 0dx950x950	
	Weight			5	

OUTDOOR UNITS				R50GV1K9	R60GV1K9
Dimensions	Unit	HeightxWidthxDepth	mm	540x750x270	685x800x300
Weight	Unit		kg	42	61
Operation range	Cooling	Ambient~Min.~Max.	°CDB	19.4~54	
	Heating	Ambient~Min.~Max.	°CWB	---	
Sound power level	Cooling	Nom.	dBA	-	
Sound pressure level	Cooling	Nom.	dBA	49 + 49 + 50	54 + 54 + 55
Refrigerant	Type			R-22	
Power supply	Phase/Frequency/Voltage			1~/50/220-240	
Piping connections	Level difference/U - OU/Max./U - IU/Max./Heat insulation			-15/	
System - Total piping length	System	Actual	m	-	

Note (1) Cooling: return air temp.27°CDB, 19.5°CWB; outdoor temp.35°CDB, equivalent refrigerant piping length: 5m (horizontal)  
 Note (2) Cooling: return air temp.27°CDB, 19°CWB; outdoor temp.35°CDB, equivalent refrigerant piping length: 5m (horizontal)



FHC71,100KVE9



R100FUV19



BRC1C61

BRC7C613W

- › Ideal solution for shops, restaurants or offices requiring maximum floor space for furniture, decorations and fittings
- › Outdoor units for pair application
- › Choice between 8 air flow distribution patterns
- › Outdoor units are fitted with a scroll compressor, renowned for its low noise and high energy efficiency
- › Possibility to shut 1 or 2 flaps for easy installation in corners
- › Daikin outdoor units are neat, sturdy and can easily be mounted on a roof or terrace or simply placed against an outside wall
- › Air flow distribution for ceiling heights up to 4.2m without capacity loss
- › Choice between 3 auto swing positions for maximum comfort: standard, draught prevention, ceiling soiling prevention
- › Two selectable thermo-sensors
- › Standard drain pump with 750mm lift
- › Centralised control of several units can be achieved via 3 wired controls: centralised remote control, unified on/off control, schedule timer



## COOLING ONLY

INDOOR UNITS				FHC71KVE9	FHC100KVE9
EER				3.00 (1) + 2.98 (2)	2.87 (1) + 2.88 (2)
COP				-	
Annual energy consumption			kWh	1300 + 1290	1845 + 1825
Energy label	Cooling/Heating			C/	
Dimensions	Unit	HeightxWidthxDepth	mm	230x840x840	288x840x840
Weight	Unit			24	28
Sound pressure level	Cooling	High/Low	dBA	35 (1) + 37 (2)/30 (1) + 32 (2)	39 (1) + 41 (2)/34 (1) + 36 (2)
Refrigerant	Type			R-22	
Power supply	Phase/Frequency/Voltage			1~/50/60/220-240/220	
Piping connections	Liquid	OD	mm	9.52	
	Gas	Quantity - OD	mm	- 15.9	- 19.1
	Drain	Quantity-OD	mm	-26	
Decoration panel	Model			BYC125K-W1	
	Colour			White	
	Dimensions	HeightxWidthxDepth	mm	40 0dx950x950	
	Weight			ka	5

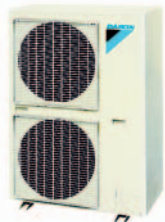
OUTDOOR UNITS				R71FUV19	R100FUV19
Dimensions	Unit	HeightxWidthxDepth	mm	816x880x370	1215x880x370
Weight	Unit			82	105
Operation range	Cooling	Ambient~Min.~Max.	°CDB	21~52	
	Heating	Ambient~Min.~Max.	°CWB	---	
Sound power level	Cooling	Nom.	dBA	-	
Refrigerant	Type	R-22			
Power supply	Phase/Frequency/Voltage		Hz/V	1~/50/220-440	
Piping connections	Level difference/1U - 0U/Max./1U - 1U/Max./Heat insulation		m	30/-/	
System - Total piping length	System	Actual	m	-	

Note (1) Cooling: return air temp.27°CDB, 19.5°CWB; outdoor temp.35°CDB, equivalent refrigerant piping length: 5m (horizontal)  
 Note (2) Cooling: return air temp.27°CDB, 19°CWB; outdoor temp.35°CDB, equivalent refrigerant piping length: 5m (horizontal)





FHC71,100,125K



R100,125FUY19



BRC1C61



BRC7C613W

- › Ideal solution for shops, restaurants or offices requiring maximum floor space for furniture, decorations and fittings
- › Outdoor units for pair application
- › Choice between 8 air flow distribution patterns
- › Outdoor units are fitted with a scroll compressor, renowned for its low noise and high energy efficiency
- › Possibility to shut 1 or 2 flaps for easy installation in corners
- › Daikin outdoor units are neat, sturdy and can easily be mounted on a roof or terrace or simply placed against an outside wall
- › Air flow distribution for ceiling heights up to 4.2m without capacity loss
- › Choice between 3 auto swing positions for maximum comfort: standard, draught prevention, ceiling soiling prevention
- › Two selectable thermo-sensors
- › Standard drain pump with 750mm lift
- › Centralised control of several units can be achieved via 3 wired controls: centralised remote control, unified on/off control, schedule timer



## COOLING ONLY

INDOOR UNITS				FHC71KVE9	FHC100KVE9	FHC125KVE9
EER				3.00 (1) + 2.98 (2)	2.87 (1) + 2.88 (2)	2.96 (1) + 2.94 (2)
COP				-		
Annual energy consumption			kWh	1300 + 1290	1845 + 1825	2195 + 2175
Energy label	Cooling/Heating			C/		
Dimensions	Unit	HeightxWidthxDepth	mm	230x840x840	288x840x840	
Weight	Unit		kg	24	28	
Sound pressure level	Cooling	High/Low	dBA	35 (1) + 37 (2)/30 (1) + 32 (2)	39 (1) + 41 (2)/34 (1) + 36 (2)	42 (1) + 44 (2)/36 (1) + 38 (2)
Refrigerant	Type			R-22		
Power supply	Phase/Frequency/Voltage			Hz/V		
Piping connections	Liquid	OD	mm	1~/50/60/220-240/220		
	Gas	Quantity - OD	mm	9.52		
	Drain	Quantity-OD	mm	- 15.9		
Decoration panel	Model			- 19.1		
	Colour			-26		
	Dimensions	HeightxWidthxDepth	mm	BYC125K-W1		
	Weight			kg	White	
				40 0dx950x950		
				5		

OUTDOOR UNITS				R71FUY19	R100FUY19	R125FUY19
Dimensions	Unit	HeightxWidthxDepth	mm	816x880x370	1215x880x370	
Weight	Unit		kg	80	101	106
Operation range	Cooling	Ambient~Min.~Max.	°CDB		21~52	
	Heating	Ambient~Min.~Max.	°CWB		---	
Sound power level	Cooling	Nom.	dBA		-	
Refrigerant	Type			R-22		
Power supply	Phase/Frequency/Voltage	Hz/V		3~/50/380-415		
Piping connections	Level difference/UU - OU/Max./UU - UU/Max./Heat insulation	m		30/-/-		
System - Total piping length	System	Actual	m	-		

Note (1) Cooling: return air temp.27°CDB, 19.5°CWB; outdoor temp.35°CDB, equivalent refrigerant piping length: 5m (horizontal)  
 Note (2) Cooling: return air temp.27°CDB, 19°CWB; outdoor temp.35°CDB, equivalent refrigerant piping length: 5m (horizontal)



FH60BVE



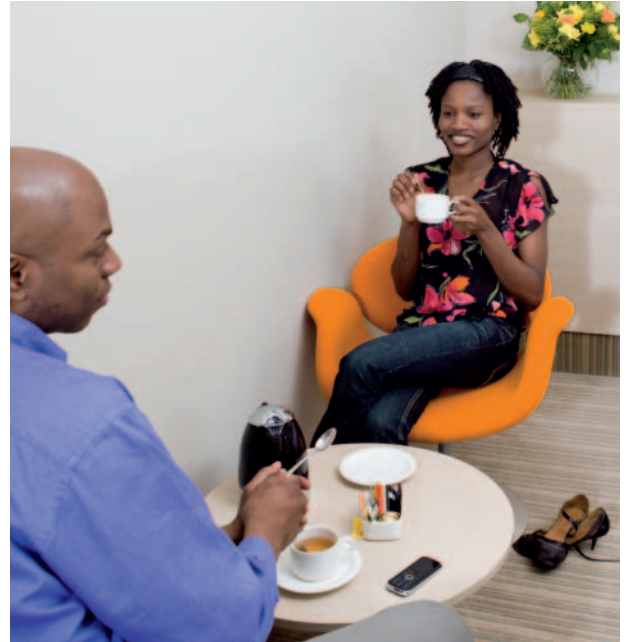
R50GV1K9



BRC1C61

BRC7E66

- > Outdoor units for pair application
- > Daikin outdoor units are neat, sturdy and can easily be mounted on a roof or terrace or simply placed against an outside wall
- > Acryl pretreated outdoor unit heat exchanger PE fins improve resistance to salt corrosion and atmospheric pollution and increase unit durability
- > Ideal solution for shops, restaurants or offices without false ceilings
- > Compact design
- > Auto swing function ensures efficient air and temperature distribution
- > Air flow distribution for ceiling heights up to 3.5m without capacity loss
- > Wider air discharge thanks to Coanda effect: up to 100°
- > Drain pump kit available as accessory
- > Easy installation and maintenance
- > Two selectable thermo-sensors



## COOLING-ONLY

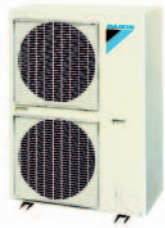
INDOOR UNITS				FH50BVE	FH60BVE
EER				2.40 (1) + 2.37 (2)	2.36 (1) + 2.34 (2)
COP				-	-
Annual energy consumption				1080 + 1075	1400 + 1390
Energy label	Cooling/Heating			E + F/	F/
Dimensions	Unit	HeightxWidthxDepth	mm	195x960x680	195x1160x680
Weight	Unit		kg	24	26
Casing	Colour			White	
Sound power level	Cooling	High/Low	dBA	54/49	
Sound pressure level	Cooling	High/Low	dBA	38/33	
Refrigerant	Type			R-22	
Power supply	Phase/Frequency/Voltage		Hz/V	1~/50/60/220-240/220	
Piping connections	Liquid	OD	mm	6.35	
	Gas	Quantity - OD	mm	- 15.9	
	Drain	Quantity-OD	mm	-18.0	

OUTDOOR UNITS				R50GV1K9	R60GV1K9
Dimensions	Unit	HeightxWidthxDepth	mm	540x750x270	685x800x300
Weight	Unit		kg	42	61
Operation range	Cooling	Ambient~Min.~Max.	°CDB	19.4~54	
	Heating	Ambient~Min.~Max.	°CWB	---	
Sound power level	Cooling	Nom.	dBA	-	
Sound pressure level	Cooling	Nom.	dBA	49 + 49 + 50	54 + 54 + 55
Refrigerant	Type			R-22	
Power supply	Phase/Frequency/Voltage		Hz/V	1~/50/220-240	
Piping connections	Level difference/U - OU/Max./U - IU/Max./Heat insulation		m	-15/	
System - Total piping length	System	Actual	m	-	

Note (1) Cooling: indoor temp.27°CDB, 19.5°CWB; outdoor temp.35°CDB, 24°CWB; equivalent piping length: 5m (horizontal)  
 Note (2) Cooling: indoor temp.27°CDB, 19°CWB; outdoor temp.35°CDB, 24°CWB; equivalent piping length: 5m (horizontal); Standard JISB8616



FH100BVE



R100FUV19



BRC1C61



BRC7E66

- › Ideal solution for shops, restaurants or offices without false ceilings
- › Outdoor units for pair application
- › Compact design
- › Outdoor units are fitted with a scroll compressor, renowned for its low noise and high energy efficiency
- › Daikin outdoor units are neat, sturdy and can easily be mounted on a roof or terrace or simply placed against an outside wall
- › Auto swing function ensures efficient air and temperature distribution
- › Air flow distribution for ceiling heights up to 3.5m without capacity loss
- › Wider air discharge thanks to Coanda effect: up to 100°
- › Drain pump kit available as accessory
- › Easy installation and maintenance
- › Two selectable thermo-sensors



## COOLING ONLY

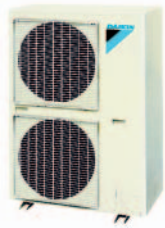
INDOOR UNITS				FH71BVE	FH100BVE
EER				3.02 (1) + 3.01 (2)	2.80 (1) + 2.80 (2)
COP				-	
Annual energy consumption			kWh	1290 + 1280	1895 + 1875
Energy label	Cooling/Heating			B/	D/
Dimensions	Unit	HeightxWidthxDepth	mm	195x1160x680	195x1400x680
Weight	Unit			27	32
Casing	Colour			White	
Sound power level	Cooling	High/Low	dBA	55/51	58/53
Sound pressure level	Cooling	High/Low	dBA	39/35	42/37
Refrigerant	Type			R-22	
Power supply	Phase/Frequency/Voltage			1~/50/60/220-240/220	
Piping connections	Liquid	OD	mm	9.52	
	Gas	Quantity - OD	mm	- 15.9	- 19.1
	Drain	Quantity-OD	mm	-26	

OUTDOOR UNITS				R71FUV19	R100FUV19
Dimensions	Unit	HeightxWidthxDepth	mm	816x880x370	1215x880x370
Weight	Unit			82	105
Operation range	Cooling	Ambient~Min.~Max.	°CDB	21~52	
	Heating	Ambient~Min.~Max.	°CWB	~~~	
Sound power level	Cooling	Nom.	dBA	-	
Refrigerant	Type			R-22	
Power supply	Phase/Frequency/Voltage			1~/50/220-440	
Piping connections	Level difference/U - OU/Max./U - U/Max./Heat insulation			30/-/	
System - Total piping length	System	Actual	m	-	

Note (1) Cooling:indoor temp.27°CDB, 19.5°CWB; outdoor temp.35°CDB, 24°CWB; equivalent piping length: 5m (horizontal)  
 Note (2) Cooling:indoor temp.27°CDB, 19°CWB; outdoor temp.35°CDB, 24°CWB; equivalent piping length: 5m (horizontal); Standard JISB8616



FH100BVE



R100,125FUY19



BRC1C61

BRC7E66

- › Ideal solution for shops, restaurants or offices without false ceilings
- › Outdoor units for pair application
- › Compact design
- › Outdoor units are fitted with a scroll compressor, renowned for its low noise and high energy efficiency
- › Daikin outdoor units are neat, sturdy and can easily be mounted on a roof or terrace or simply placed against an outside wall
- › Auto swing function ensures efficient air and temperature distribution
- › Air flow distribution for ceiling heights up to 3.5m without capacity loss
- › Wider air discharge thanks to Coanda effect: up to 100°
- › Drain pump kit available as accessory
- › Easy installation and maintenance
- › Two selectable thermo-sensors



## COOLING ONLY

INDOOR UNITS				FH71BVE		FH100BVE		FH125BVE	
EER				3.02 (1) + 3.01 (2)		2.80 (1) + 2.80 (2)		2.95 (1) + 2.94 (2)	
COP						-			
Annual energy consumption			kWh	1290 + 1280		1895 + 1875		2200 + 2180	
Energy label	Cooling/Heating			B/		D/		C/	
Dimensions	Unit	HeightxWidthxDepth	mm	195x1160x680		195x1400x680		195x1590x680	
Weight	Unit		kg	27		32		35	
Casing	Colour					White			
Sound power level	Cooling	High/Low	dBA	55/51		58/53		60/55	
Sound pressure level	Cooling	High/Low	dBA	39/35		42/37		44/39	
Refrigerant	Type					R-22			
Power supply	Phase/Frequency/Voltage			Hz/V		1~/50/60/220-240/220			
Piping connections	Liquid	OD	mm			9.52			
	Gas	Quantity - OD	mm	- 15.9				- 19.1	
	Drain	Quantity-OD	mm			-26			

OUTDOOR UNITS				R71FUY19	R100FUY19	R125FUY19
Dimensions	Unit	HeightxWidthxDepth	mm	816x880x370	1215x880x370	
Weight	Unit		kg	80	101	106
Operation range	Cooling	Ambient~Min.~Max.	°CDB		21~52	
	Heating	Ambient~Min.~Max.	°CWB		~-~	
Sound power level	Cooling	Nom.	dBA		-	
Refrigerant	Type				R-22	
Power supply	Phase/Frequency/Voltage		Hz/V		3~/50/380-415	
Piping connections	Level difference/U - OU/Max./U - U/Max./Heat insulation		m		30/-/	
System - Total piping length	System	Actual	m		-	

Note (1) Cooling:indoor temp.27°CDB, 19.5°CWB; outdoor temp.35°CDB, 24°CWB; equivalent piping length: 5m (horizontal)  
 Note (2) Cooling:indoor temp.27°CDB, 19°CWB; outdoor temp.35°CDB, 24°CWB; equivalent piping length: 5m (horizontal); Standard JISB8616







FDYB-C



RY-CV1M



SLM3

- › Ideal solution for shops, restaurants or offices requiring maximum floor space for furniture, decorations and fittings
- › Outdoor units for pair application
- › Blends unobtrusively with any interior décor: only the suction and discharge grilles are visible
- › Daikin outdoor units are neat, sturdy and can easily be mounted on a roof or terrace or simply placed against an outside wall
- › Slim design for flexible installation
- › Outdoor units are fitted with either a rotary or scroll compressor, renowned for low noise and high energy efficiency
- › Easy operation and maintenance
- › Compact indoor models and twin coil structure save installation space
- › Medium external static pressure facilitates unit use with flexible ducts of varying lengths
- › Double protection drainage system



## HEATING & COOLING

INDOOR UNITS				FDYB30CV1M	FDYB40CV1M	FDYB60CV1M	FDYB71CV1M	FDYB90CV1M	FDYB125CV1M
EER				3.18	2.95	3.03	2.95	2.75	2.82
COP				3.31		3.32	3.24	3.15	2.85
Annual energy consumption				kWh	438	611	919	1143	1558
Energy label				Cooling/Heating	B/C	C/C	B/C	C/C	D/D
Dimensions				Unit	HeightxWidthxDepth		mm	261x765x411	261x1200x411
Weight				Unit	kg	17	21	22	25
Casing				Colour	Without powder paint				
Fan-External static pressure				Super high	Pa	-			49
				High	Pa	20			39
				Nom.	Pa	9.8			29
				Low	Pa	4.9			20
Sound power level				Cooling	Super high/High/Nom./Low	dBA	-57/54/51	-61/58/52	-65/64/60
Sound pressure level				Cooling	Super high/High/Nom./Low	dBA	-76/73/69/64	-78/76/72/68	-81/78/74/70
Refrigerant				Type	R-22				
Power supply				Phase/Frequency/Voltage	Hz/V	1~/50/220-240			
Piping connections				Liquid	OD	6.35		9.52	
				Gas	Quantity - OD	mm	- 9.52	- 12.7	- 15.9
				Drain	Quantity-OD	mm	--		

OUTDOOR UNITS				RY30CV1M	RY40CV1M	RY60CV1M	RY71CV1M	RY80CV1M	RY90CV1M	RY100CV1M	RY125CV1M
Dimensions	Unit	HeightxWidthxDepth	mm	540x700x250		648x855x328	750x855x328		850x1030x400		
Weight	Unit		kg	32		59	62	68	95		100
Operation range	Cooling	Ambient~Min.~Max.	°CDB	19.0~46.0							
	Heating	Ambient~Min.~Max.	°CWB	-9.0~18.0							
Sound power level	Cooling	Nom.	dBA	-							
Refrigerant	Type	R-22									
Power supply	Phase/Frequency/Voltage		Hz/V	1~/50/220-240							
Piping connections	Level difference/OU - OU/Max./IU - IU/Max./Heat insulation			m	5/-/		8/-/		25/-/		
System - Total piping length	System	Actual	m	-							





FDYB-C



RY-CY1M



SLM3

- › Ideal solution for shops, restaurants or offices requiring maximum floor space for furniture, decorations and fittings
- › Outdoor units for pair application
- › Blends unobtrusively with any interior décor: only the suction and discharge grilles are visible
- › Daikin outdoor units are neat, sturdy and can easily be mounted on a roof or terrace or simply placed against an outside wall
- › Slim design for flexible installation
- › Outdoor units are fitted with either a rotary or scroll compressor, renowned for low noise and high energy efficiency
- › Easy operation and maintenance
- › Compact indoor models and twin coil structure save installation space
- › Medium external static pressure facilitates unit use with flexible ducts of varying lengths
- › Double protection drainage system



## HEATING & COOLING

INDOOR UNITS				FDYB90CV1M	FDYB125CV1M	FDYB140CV1M	FDYB160CV1M
EER				2.84	3.22	2.89	2.79
COP				2.87	3.50	3.47	3.38
Annual energy consumption			kWh	1548	1822	2535	2942
Energy label	Cooling/Heating			C/D	A/B	C/B	D/C
Dimensions	Unit	HeightxWidthxDepth	mm	378x929x541	378x1045x541	378x1299x541	378x1499x541
Weight	Unit		kg	39	42	54	62
Casing	Colour			Without powder paint			
Fan-External static pressure	Super high		Pa	49		78	69
	High		Pa	39		59	49
	Nom.		Pa	29		39	29
	Low		Pa	20			
Sound power level	Cooling	Super high/High/Nom./Low	dBA	76/73/69/64	78/76/72/68	78/76/73/70	79/78/75/71
Sound pressure level	Cooling	Super high/High/Nom./Low	dBA	49/46/42/38	51/49/45/41	53/52/50/47	55/53/50/47
Refrigerant	Type			R-22			
Power supply	Phase/Frequency/Voltage			1~/50/220-240			
Piping connections	Liquid	OD	mm	9.52			12.7
	Gas	Quantity - OD	mm	- 15.9	- 19.1		
	Drain	Quantity-OD	mm	--			

OUTDOOR UNITS				RY90CY1M	RY125CY1M	RY140CY1M	RY160CY1M
Dimensions	Unit	HeightxWidthxDepth	mm	850x1030x400			
Weight	Unit		kg	95	100	105	108
Operation range	Cooling	Ambient~Min.~Max.	°CDB	19.0~46.0			
	Heating	Ambient~Min.~Max.	°CWB	-9.0~18.0			
Sound power level	Cooling	Nom.	dBA	-			
Refrigerant	Type			R-22			
Power supply	Phase/Frequency/Voltage			3~/50/380-415			
Piping connections	Level difference/OU - OU/Max./IU - IU/Max./Heat insulation			25/-/			15/-/
System - Total piping length	System	Actual	m	-			



FDYM-C



RY60-80CV1M



UAT-AMY1

- › Ideal solution for shops, restaurants or offices requiring maximum floor space for furniture, decorations and fittings
- › Outdoor units for pair application
- › Blends unobtrusively with any interior décor: only the suction and discharge grilles are visible
- › Daikin outdoor units are neat, sturdy and can easily be mounted on a roof or terrace or simply placed against an outside wall
- › Slim design for flexible installation
- › Outdoor units are fitted with either a rotary or scroll compressor, renowned for low noise and high energy efficiency
- › Easy operation and maintenance
- › Compact indoor models and twin coil structure save installation space
- › Medium external static pressure facilitates unit use with flexible ducts of varying lengths
- › Double protection drainage system



## HEATING & COOLING

INDOOR UNITS				30	40	60	71	80	90	100	125	
EER				3.09	2.84	2.94	2.63	2.56	2.85	2.73	2.80	
COP				3.52	3.39	3.14	2.77	3.11	2.87	3.11	2.82	
Annual energy consumption				kWh	450	634	948	1308	1546	1545	1573	
Energy label	Cooling/Heating			B/B	C/C	C/D	D/E	E/D	C/D	D/D		
Dimensions	Unit	HeightxWidthxDepth	mm	261x765x411	261x905x411	261x1065x411	261x1200x411	285x1007x600	378x929x541	305x1302x638	378x1045x541	
Weight	Unit		kg	17	21	22	25	38	39	41	42	
Casing	Colour			Without powder paint								
Fan-External static pressure	Super high		Pa	-				98	206	137	206	
	High		Pa	49			69	41	78	167	118	176
	Nom.		Pa	39			65	31	68	127	108	127
	Low		Pa	29	20	42	18	59	88		93	
Sound power level	Cooling	Super high/High/Nom./Low	dBA	-57/54/51	-61/58/52	-65/64/60	-66/64/61	67/64/61/57	76/73/69/64	80/76/73/70	78/76/72/68	
Sound pressure level	Cooling	Super high/High/Nom./Low	dBA	-33/26/20	-37/34/29	-38/36/34	-40/39/36	44/41/38/34	49/46/42/38	55/51/48/45	51/49/45/41	
Refrigerant	Type			R-22								
Power supply	Phase/Frequency/Voltage			Hz/V	1~50/220-240							
Piping connections	Liquid	OD	mm	6.35			9.52					
	Gas	Quantity - OD	mm	- 9.52	- 12.7	- 15.9						
	Drain	Quantity-OD	mm	--								

OUTDOOR UNITS				30	40	60	71	80	90	100	125
Dimensions	Unit	HeightxWidthxDepth	mm	540x700x250		648x855x328	750x855x328		850x1030x400		
Weight	Unit		kg	32		59	62	68	95		100
Operation range	Cooling	Ambient~Min.~Max.	°CDB	19.0~46.0							
	Heating	Ambient~Min.~Max.	°CWB	-9.0~18.0							
Sound power level	Cooling	Nom.	dBA	-							
Refrigerant	Type			R-22							
Power supply	Phase/Frequency/Voltage		Hz/V	1~/50/220-240							
Piping connections	Level difference/UU - OU/Max./U - U/Max/Heat insulation		m	5/-		8/-		25/-			
System - Total piping length	System	Actual	m	-							

Note: Cooling:indoor temp.27°CDB, 19°CWB; outdoor temp. 35°CDB,24°CWB; Heating: indoor temp. 20°CDB; outdoor temp. 7°CDB,6°CWB





FDYM-C

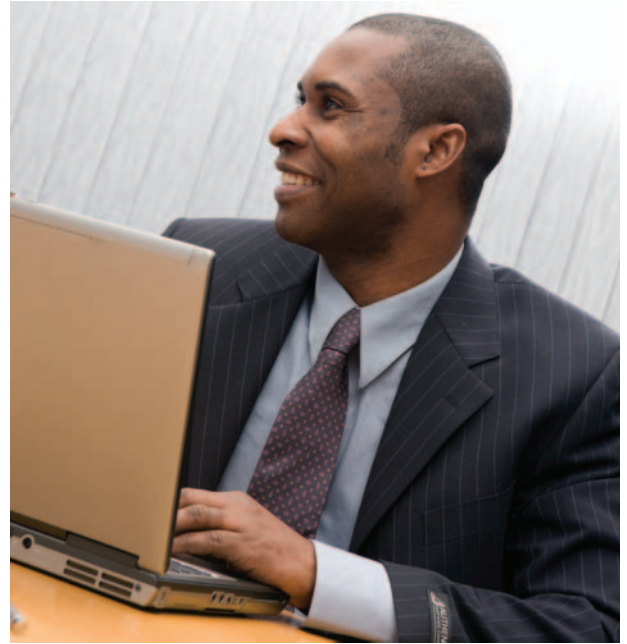


RY-CY1M



UAT-AMY1

- › Ideal solution for shops, restaurants or offices requiring maximum floor space for furniture, decorations and fittings
- › Outdoor units for pair application
- › Blends unobtrusively with any interior décor: only the suction and discharge grilles are visible
- › Daikin outdoor units are neat, sturdy and can easily be mounted on a roof or terrace or simply placed against an outside wall
- › Slim design for flexible installation
- › Outdoor units are fitted with either a rotary or scroll compressor, renowned for low noise and high energy efficiency
- › Easy operation and maintenance
- › Compact indoor models and twin coil structure save installation space
- › Medium external static pressure facilitates unit use with flexible ducts of varying lengths
- › Double protection drainage system



## HEATING & COOLING

INDOOR UNITS				FDYM80CV1M	FDYM90CV1M	FDYM100CV1M	FDYM125CV1M	FDYM140CV1M	FDYM160CV1M
EER				2.86	2.81	2.98	3.17	2.90	2.73
COP				2.89	2.84	3.28	3.65	3.49	3.30
Annual energy consumption			kWh	1535	1563	1868	1849	2524	3005
Energy label	Cooling/Heating			C/D		C/C	B/A	C/B	D/C
Dimensions	Unit	HeightxWidthxDepth	mm	285x1007x600	378x929x541	305x1302x638	378x1045x541	378x1299x541	378x1499x541
Weight	Unit		kg	38	39	41	42	54	62
Casing	Colour			Without powder paint					
Fan-External static pressure	Super high		Pa	98	206	137	206	176	
	High		Pa	78	167	118	176	157	
	Nom.		Pa	68	127	108	127	137	
	Low		Pa	59	88		93	108	98
Sound power level	Cooling	Super high/High/Nom./Low	dBA	67/64/61/57	76/73/69/64	80/76/73/70	78/76/72/68	78/76/73/70	79/78/75/71
Sound pressure level	Cooling	Super high/High/Nom./Low	dBA	44/41/38/34	49/46/42/38	55/51/48/45	51/49/45/41	53/52/50/47	55/53/50/47
Refrigerant	Type			R-22					
Power supply	Phase/Frequency/Voltage		Hz/V	1~/50/220-240					
Piping connections	Liquid	OD	mm	9.52				12.7	
	Gas	Quantity - OD	mm	- 15.9		- 19.1			
	Drain	Quantity-OD	mm	--					

OUTDOOR UNITS				RY90CY1M	RY125CY1M	RY140CY1M	RY160CY1M
Dimensions	Unit	HeightxWidthxDepth	mm	850x1030x400			
Weight	Unit		kg	95	100	105	108
Operation range	Cooling	Ambient~Min.~Max.	°CDB	19.0~46.0			
	Heating	Ambient~Min.~Max.	°CWB	-9.0~18.0			
Sound power level	Cooling	Nom.	dBA	-			
Refrigerant	Type			R-22			
Power supply	Phase/Frequency/Voltage			3~/50/380-415			
Piping connections	Level difference/U - OU/Max./U - IU/Max./Heat insulation			25/-/		15/-/	
System - Total piping length	System	Actual	m	-			

Note: Cooling:indoor temp.27°CDB, 19°CWB; outdoor temp. 35°CDB,24°CWB; Heating: indoor temp. 20°CDB; outdoor temp. 7°CDB,6°CWB



A range of high performance, low energy consumption air cooled packaged roof top units is produced by Daikin for supermarket, warehouse, factory, hotel, hospital, cinema and large store applications. Heat pump 'plug and play' versions are easy to install and available as fully integrated systems comprising compressor, evaporator and condensing units for air transmission through ductwork to the conditioned space.

## ROOFTOP & PACKAGED SYSTEMS

---

<b>Rooftops</b>	<b>30</b>
UAT-AMY1	30
UATY-AMY1	31
 <b>Packaged Systems</b>	 <b>32</b>
FD-K / RU-K	32
FRPJ-P / CRJ-P	34
FRPJ-P / CRJ-P	35
FRJ-P / CRJ-P	36





UAT-AMY1

- › Easy to install 'plug and play' concept plus single installation configuration.
- › No additional piping is required since indoor and outdoor sides are pre-connected.
- › Factory pre-charged refrigerant ensures clean and efficient operation.
- › Belt driven fan enables air volume and static pressure to be adjusted as required.
- › Flat top unit design allows maximum utilization of warehouse and container space.
- › High efficiency and reliable scroll compressor.
- › Fan can be mounted for horizontal or vertical airflow inlet and discharge (UAT320AMY1 only).



## COOLING ONLY

OUTDOOR UNITS				UAT180AMY1	UAT240AMY1	UAT280AMY1	UAT320AMY1	UAT450AMY1	UAT560AMY1	UAT700AMY1	UAT850AMY1	UATC10AMY1	UATC12AMY1
Capacity	Cooling	Minimum	kW	17.291	23.446	29.307	33.996	43.961	58.614	73.268	87.921	96.420	118.401
Power input	Cooling		kW	5.61	8.10	10.50	11.56	15.60	20.70	27.56	35.96	39.87	46.80
EER	Nominal			3.08	2.89	2.79	2.94	2.82	2.83	2.66	2.44	2.42	2.53
Air flow rate evaporator	Cooling		m <sup>3</sup> /min	51	80	100	102	160	190	227	272	312	354
External static pressure			Pa	98	98	98	98	196	196	294	294	294	294
Condensation drain size		Diameter (OD)	mm	25.4	25.4	25.4	25.4	25.4	25.4	25.4	25.4	25.4	25.4
Casing	Colour			Light Grey									
	Material			Electro galvanised mild steel									
Dimensions	Unit	HxWxD	mm	1,000x1,100x1,530	1,000x1,300x1,530	1,000x1,300x1,530	1,000x1,300x1,530	1,200x1,990x1,670	1,200x1,990x1,670	1,735x2,250x2,800	1,735x2,250x2,800	1,974x2,252x3,180	1,974x2,252x3,180
Weight	Unit		kg	295	370	400	425	665	765	1,200	1,350	1,510	1,600
Air flow rate condensor	Cooling		m <sup>3</sup> /min	127	160	160	227	320	320	566	566	566	566
Operation range	Cooling	min	°CDB	20°C~54°C									
Sound power level			dBA	63	65	66	68	70	70	74	74	80	80
Refrigerant	Type			R22									
Power supply				3~/50Hz/380-415V									





UATY-AMY1

- > 'Plug and Play' installation: the single unit configuration requires no additional piping work as both the indoor and outdoor sides are pre-connected.
- > Refrigerant is factory pre-charged to ensure clean and efficient operation.
- > The air volume and static pressure required can be adjusted according to the requirement because of the use of a belt driven fan.
- > The flat top design of the unit allows for maximum utilization of warehouse and container space.
- > High efficiency and reliable scroll compressor (UATY180, 320, 700, 850, C10, C12AMY1).
- > Fan can be mounted for horizontal or vertical airflow inlet and discharge (class 320)



## HEATING & COOLING

OUTDOOR UNITS				UATY180AMY1	UATY240AMY1	UATY280AMY1	UATY320AMY1	UATY450AMY1	UATY560AMY1	UATY700AMY1	UATY850AMY1	UATYC10AMY1	UATYC12AMY1
Capacity	Cooling	Minimum	kW	16.705	23.446	29.307	30.772	43.961	58.614	68.872	84.991	98.180	112.539
	Heating	Nominal	kW	20.222	23.035	30.772	34.582	45.426	60.959	73.854	86.456	101.990	120.745
EER	Cooling			2.65	2.49	2.47	2.65	2.36	2.49	2.49	2.29	2.50	2.43
COP	Heating			3.18	2.95	3.06	3.09	2.95	2.99	2.80	2.56	2.85	2.96
Air flow rate evaporator		Cooling	m³/min	51	80	100	102	160	190	226	263	312	354
External static pressure			Pa	98				196		294			
Condensation drain size		Diameter (OD)	mm	25.4									
Casing	Colour			Light Grey									
	Material			Electro galvanised mild steel									
Dimensions	Unit	HxWxD	mm	1,000x1,100x1,530	1,000x1,300x1,530			1,200x1,990x1,800		1,735x2,250x2,800		1,974x2,252x3,180	
Weight	Unit		kg	320	385	415	440	700	800	1,200	1,350	1,510	1,600
Air flow rate condensor		Cooling	m³/min	127	160		283	320		566			
Operation range	Cooling	min-max	°CDB	20°C – 54°C									
	Heating	min-max	°CWD	-15°C – 20°C									
Sound power level			dBA	63	65	66	68	70	70	74	74	80	80
Refrigerant	Type			R-22									
Power supply				3~/50Hz/380-415V									



FD08KY1



RU08KY1



KRC47-3A

- > Ideal for shops, restaurants or offices requiring maximum floor space for furniture, decorations and fittings
- > Blends unobtrusively with any interior décor
- > High external static pressure facilitates unit use with flexible ducts of varying lengths
- > Centralised control of several units can be achieved via 3 wired controls: centralised remote control, unified on/off control, schedule timer



## COOLING ONLY

INDOOR UNITS				FD06KY1	FD08KY1	FD10KY1	FD15KY1	FD20KY1
Capacity	Cooling	Standard	kW	17.4	24.3	29.7	48.6	59.3
EER	Nominal					-		
Annual energy consumption			kWh			-		
Energy label	Cooling					-		
Dimensions	Unit	HeightxWidthxDepth	mm	450x1,130x850	500x1,130x850	500x1,330x850	625x1,620x850	625x1,980x850
Weight	Unit		kg	79	93	104	161	187
Air flow rate	Cooling	High	m³/min	52	68	83	136	166
Sound pressure	Cooling		dBA	51	51	53	58	60
Refrigerant	Type					R-22		
Power supply						3~/380-415V/50Hz		

OUTDOOR UNITS				RU06KY1	RU08KY1	RU10KY1	RU08KY1+RY08KY1	RU10KY1+RU10KY1
Dimensions	Unit	HeightxWidthxDepth	mm	1,345x880x320	1,220x1,280x690	1,440x1,280x690	1,220x1,280x690	1,440x1,280x690
Weight	Unit		kg	112	177	190	177	190
Operation range	Cooling	Min.~Max.	°CDB			21~52		
Sound pressure	Cooling	Standard	dBA	59	60	61	60	61
Refrigerant	Type					R-22		
Power supply						3~/380-415V/50Hz		
Piping connections	Liquid (OD)/Gas		mm	9.52 / 19.1	12.7 / 25.4	15.9 / 31.8	12.7 / 25.4	15.9 / 31.8
Piping length	Maximum		m			50		

Note: Nominal cooling capacities are based on: return air temperature 27°CDB, 19.5°CWB; outdoor: 35°CDB; equivalent refrigerant piping length 5m (horizontal)





FRPJ140,200,280P



CRJ140,200,280PAYE

- › Ideal for use in larger areas
- › Easy to install
- › Easy operation and maintenance
- › Electronic room thermostat
- › Washable air filter



## COOLING ONLY

INDOOR UNITS				FRPJ140PYE	FRPJ200PYE	FRPJ280PYE
Capacity	Cooling	Standard	kW	13.0/14.6(1) 12.8/14.3(2)	18.9/21.0(1) 18.6/20.6(2)	26.4/29.4(1) 25.9/28.9(2)
EER	Nominal				-	
Annual energy consumption			kWh		-	
Energy label	Cooling				-	
Dimensions	Unit	HeightxWidthxDepth	mm	1,640x950x510	1,640x1,170x510	1,640x1,470x510
Weight	Unit		kg	170	230	270
Air flow rate	Cooling	High	m³/min	42	63	83
Sound pressure	Cooling	Medium	dBA	53	55	57
Refrigerant	Type				R-22	
Power supply					3~/380-415/400-440V/50/60Hz	

OUTDOOR UNITS				CRJ140PAYE	CRJ200PAYE	CRJ280PAYE
Dimensions	Unit	HeightxWidthxDepth	mm	1,425x820x295	1,220x1,280x690	1,440x1,280x690
Weight	Unit		kg	52	94	104
Sound pressure	Cooling	Standard	dBA		55/56	56/57
Refrigerant	Type				R-22	
Power supply					3~/380-415/400-440V/50/60Hz	
Piping connections	Liquid (OD)/Gas		mm	9.52 / 15.9	12.7 / 19.1	15.9 / 22.2

Note (1) Cooling capacities are based on: indoor air temp. 27°CDB, 19.5°CWB; outdoor temp. 35°CDB

Note (2) Cooling capacities are based on: indoor air temp. 27°CDB, 19.0°CWB; outdoor temp. 35°CDB





FRJ400,560P



CRJ200,280PAYE

- › Ideal for use in larger areas
- › Easy to install
- › Easy operation and maintenance
- › Electronic room thermostat
- › Washable air filter



## COOLING ONLY

INDOOR UNITS				FRJ400PYE	FRJ560PYE
Capacity	Cooling	Standard	kW	37.6/42.2(1) 36.9/41.4(2)	53.3/59.4(1) 52.3/58.3(2)
EER	Nominal			-	-
Annual energy consumption			kWh	-	-
Energy label	Cooling			-	-
Dimensions	Unit	HeightxWidthxDepth	mm	1,870x1,470x720	1,870x1,810x720
Weight	Unit		kg	420	460
Air flow rate	Cooling	High	m³/min	120	165
Sound pressure	Cooling	Medium	dBA	60	63
Refrigerant	Type			R-22	
Power supply				3~/380-415/400-440V/50/60Hz	

OUTDOOR UNITS				CRJ200PAYE+CRJ200PAYE	CRJ280PAYE+CRJ280PAYE
Dimensions	Unit	HeightxWidthxDepth	mm	1,220x1,280x690	1,440x1,280x690
Weight	Unit		kg	94	104
Sound pressure	Cooling	Standard	dBA	55/56	56/57
Refrigerant	Type			R-22	
Power supply				3~/380-415/400-440V/50/60Hz	
Piping connections	Liquid (OD)/Gas		mm	12.7 / 19.1	15.9 / 22.2

Note (1) Cooling capacities are based on: indoor air temp. 27°CDB, 19.5°CWB; outdoor temp. 35°CDB

Note (2) Cooling capacities are based on: indoor air temp. 27°CDB, 19.0°CWB; outdoor temp. 35°CDB

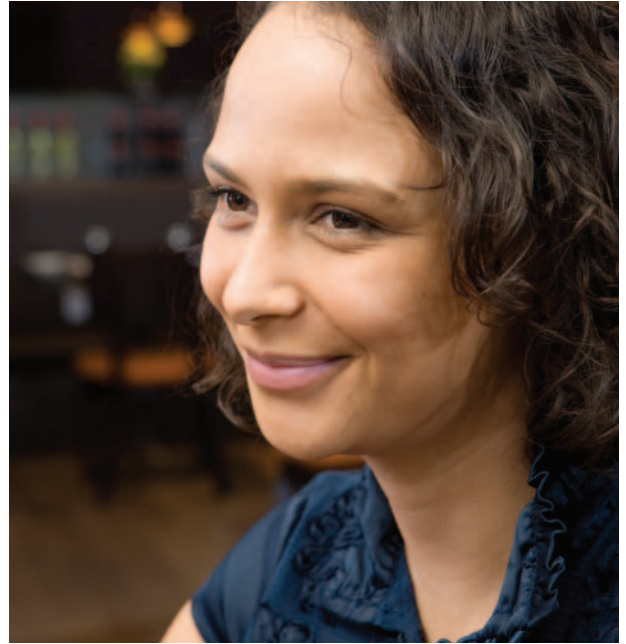


FRJ630,800,1120P



CRJ315,400,560PYE

- › Ideal for use in larger areas
- › Easy to install
- › Easy operation and maintenance
- › Electronic room thermostat
- › Washable air filter



## COOLING ONLY

INDOOR UNITS				FRJ630PYE	FRJ800PYE	FRJ1120PYE
Capacity	Cooling	Standard	kW	59.4/66.5(1) 58.3/65.3(2)	75.9/85.0(1) 74.5/83.5(2)	107.6/119.8(1) 105.7/117.7(2)
EER	Nominal				-	
Annual energy consumption			kWh		-	
Energy label	Cooling				-	
Dimensions	Unit	HeightxWidthxDepth	mm	1,870x1,810x720	1,850x1,760x1,050	1,850x1,960x1,200
Weight	Unit		kg	490	780	1,000
Air flow rate	Cooling	High	m³/min	180	240	330
Sound pressure	Cooling	Medium	dBA	63	65	67.5
Refrigerant	Type				R-22	
Power supply					3~/380-415/400-440V/50/60Hz	

OUTDOOR UNITS				CRJ315PYE+CRJ315PYE	CRJ400PYE+CRJ400PYE	CRJ560PYE+CRJ560PYE
Dimensions	Unit	HeightxWidthxDepth	mm	1,275x980x980	1,115x1,700x980	1,275x1,960x980
Weight	Unit		kg	105	145	205
Sound pressure	Cooling	Standard	dBA	55/58	58/60	60/62
Refrigerant	Type				R-22	
Power supply					3~/380-415/400-440V/50/60Hz	
Piping connections	Liquid (OD)/Gas		mm	15.9 / 22.2	19.1 / 25.4	22.2 / 31.8

Note (1) Cooling capacities are based on: indoor air temp. 27°CDB, 19.5°CWB; outdoor temp. 35°CDB

Note (2) Cooling capacities are based on: indoor air temp. 27°CDB, 19.0°CWB; outdoor temp. 35°CDB



## POWER SUPPLY

T1 = 3~, 220V, 50Hz

V1 = 1~, 220-240V, 50Hz

VE = 1~, 220-240V/220V, 50Hz/60Hz\*

V3 = 1~, 230V, 50Hz

VM = 1~, 220~240V/220~230V, 50Hz/60Hz

W1 = 3N~, 400V, 50Hz

Y1 = 3~, 400V, 50Hz

The sound pressure level is measured via a microphone at a certain distance from the unit. It is a relative value, depending on the distance and acoustic environment (for measuring conditions: please refer to the technical databooks).

The sound power level is an absolute value indicating the “power” which a sound source generates.

For more detailed information please consult our technical databooks.





WWW.DAIKINAFRICA.COM



Daikin's unique position as a manufacturer of air conditioning equipment, compressors and refrigerants has led to its close involvement in environmental issues. For several years Daikin has had the intention to become a leader in the provision of products that have limited impact on the environment. This challenge demands the eco design and development of a wide range of products and an energy management system, resulting in energy conservation and a reduction of waste.



Daikin Europe N.V. participates in the Eurovent Certification Programme for Air Conditioners (AC), Liquid Chilling Packages (LCP) and Fan Coil Units (FCU); the certified data of certified models are listed in the Eurovent Directory. Multi units are Eurovent certified for combinations up to 2 indoor units.



The present leaflet is drawn up by way of information only and does not constitute an offer binding upon Daikin Europe N.V. Daikin Europe N.V. has compiled the content of this leaflet to the best of its knowledge. No express or implied warranty is given for the completeness, accuracy, reliability or fitness for particular purpose of its content and the products and services presented therein. Specifications are subject to change without prior notice. Daikin Europe N.V. explicitly rejects any liability for any direct or indirect damage, in the broadest sense, arising from or related to the use and/or interpretation of this leaflet. All content is copyrighted by Daikin Europe N.V.

Daikin products are distributed by:



ECPEN10-022